

#### APPLICATION:

Liquid metering vessels where a 12 to 15 psig back pressure is desired.

Any system which requires a valve to receive a 30 psig maximum pilot signal on either or both sides of the main diaphragm operating at pressures up to 300 psig.

#### FEATURES:

- Tight shut-off
- Single soft seat
- Removable valve seat
- Ratio of diaphragm to seat area is:  
8:1
- Controls 8 times signal pressure
- Minimum maintenance
- All internal parts can be removed with valve in line

#### CAPACITY:

- For liquid capacity refer to table of contents.
- For gas capacity refer to catalog section "A."

#### CONSTRUCTION:

Body and housings are available in cast iron, ductile iron or steel. Valve stem is 303 stainless steel. Spring is stainless steel. Diaphragm and seating materials are oil resistant synthetic rubber or polyurethane. After assembly each valve is given a complete operational test.

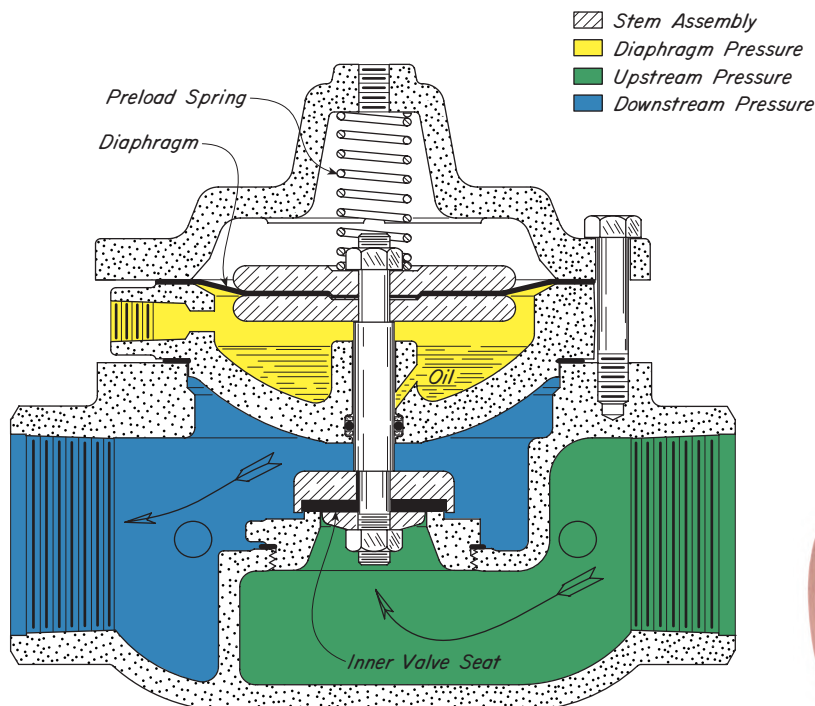
#### OPERATION:

The Stem Assembly is the only moving unit in the double acting motor valve. The PRELOAD SPRING loads the Stem Assembly closing the valve if there is no Diaphragm Pressure (Yellow) and if Upstream Pressure (Green) minus Downstream Pressure (Blue) is 12 to 15 psig or less.

An increase in the Diaphragm Pressure (Yellow) and/or an increase in the differential pressure across the INNER VALVE SEAT overcomes the PRELOAD SPRING force, move the Stem Assembly upward, opening the valve.

A decrease in the Diaphragm Pressure (Yellow) allows the PRELOAD SPRING to move the Stem Assembly downward and close the valve when Upstream Pressure (Green) minus Downstream Pressure (Blue) is 12 to 15 psig or less.

With an effective DIAPHRAGM area five times the INNER VALVE SEAT area, and the PRELOAD SPRING, a differential pressure greater than 12 to 15 psig and/or 3 psig or more Diaphragm Pressure (Yellow) will open the motor valve.

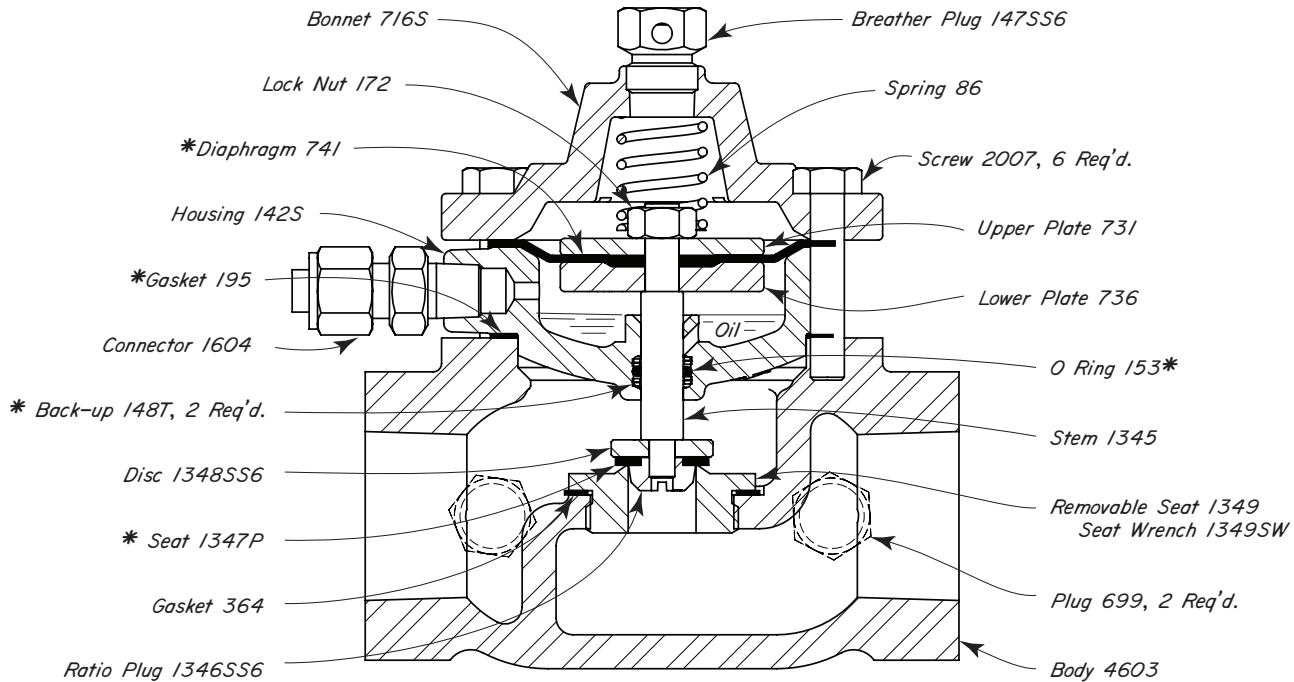


Kimray is an ISO 9001- certified manufacturer.

# LOW PRESSURE CONTROL VALVES



## MT DA5 WITH REDUCED INNER VALVE STEEL



### THRU VALVES AVAILABLE:

CAT. NO.	SIZE TYPE	REG. NO	OPER. PRES.	MAX W.P.	KIT
EMA	1" SCR.D.	130 SMT DAB-S	500	500	RDB

### NOTES:

\*These parts are recommended spare parts and are stocked as repair kits.